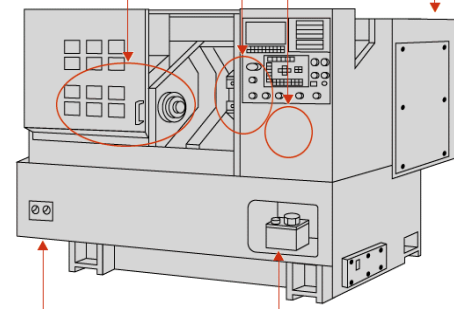
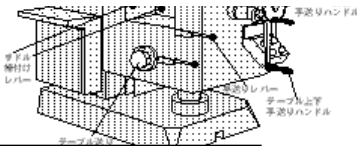


NC旋盤・自動盤・研削盤等  
(NC Turning lathe, Auto lathe  
Grinding Machine Etc...)



油圧駆動ユニット

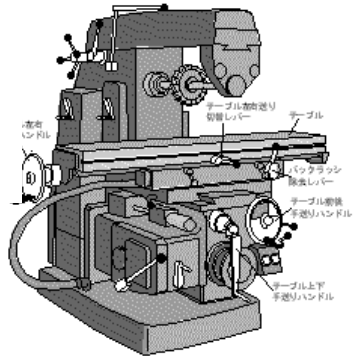
潤滑ユニット



② 各種 ベアリング  
交換,  
各種 機械部品の  
交換  
(Changing Bearing  
and changing  
any parts of machine.)



① 各種 スピンドル部オーバーホール  
ベアリング交換からスピンドル軸調整  
(Spindle overhaul and changing Bearing axis adjustment)

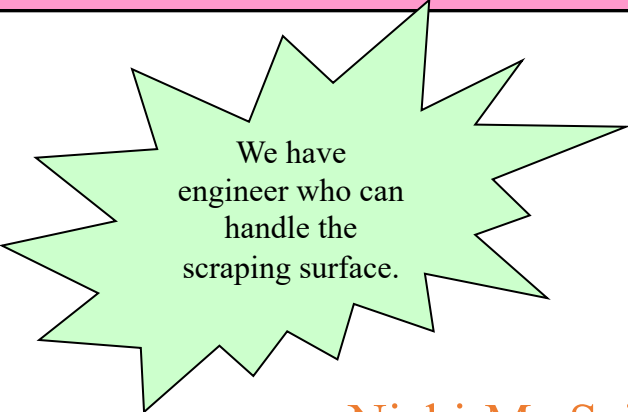


③ 各種 ボールねじの交換  
(Change of Ball screw)

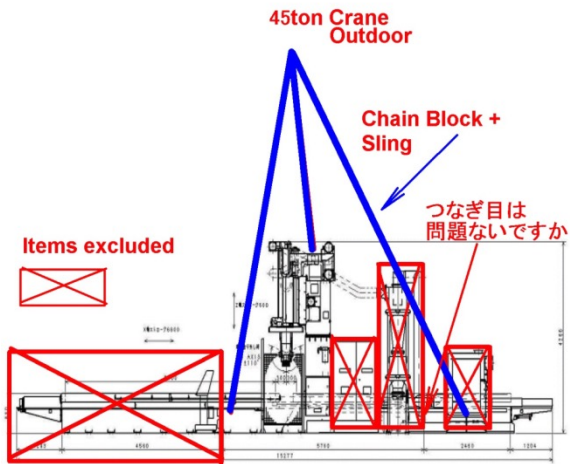
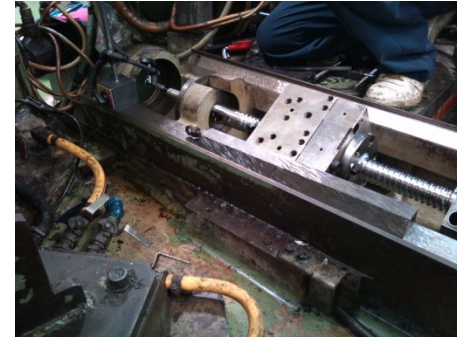
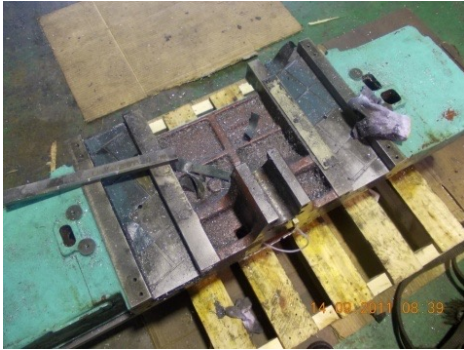
④ 各種 摺動部・スライド部調整  
フライス加工、研磨、きさげ仕上  
\*研磨・フライス 可能サイズ  
1000Lx500Wx150H  
(Adjustment of the slide way  
Milling, Grinding, Scraping)  
\*ability of correspond table size  
1000L x 500W x 150H

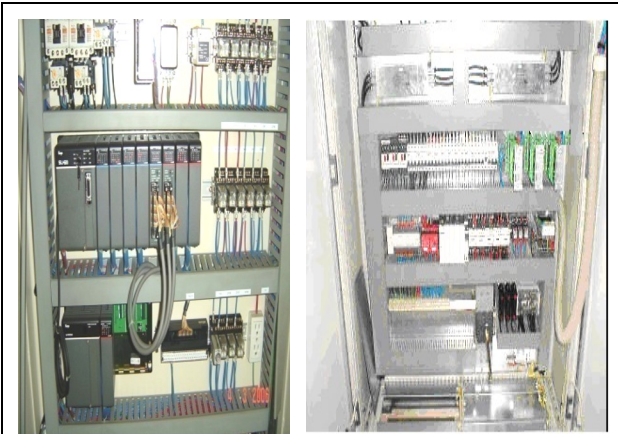


M/C・フライス盤・平面研削盤 等  
Machining center,  
Milling machine, Surface grinding machine etc

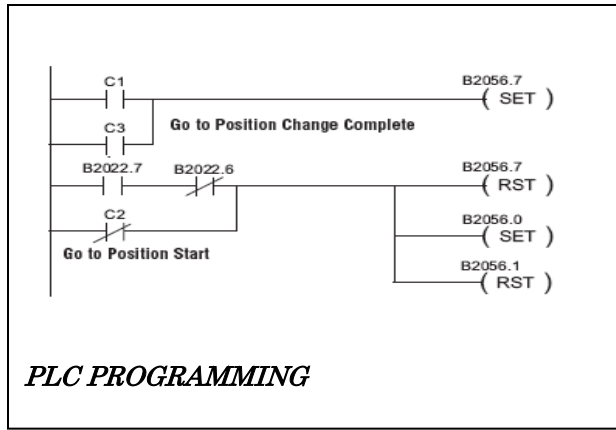


We have  
engineer who can  
handle the  
scraping surface.

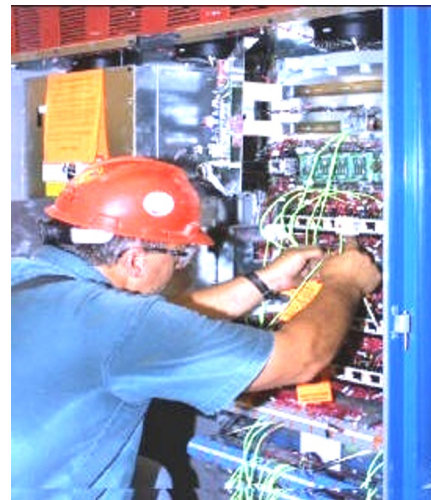




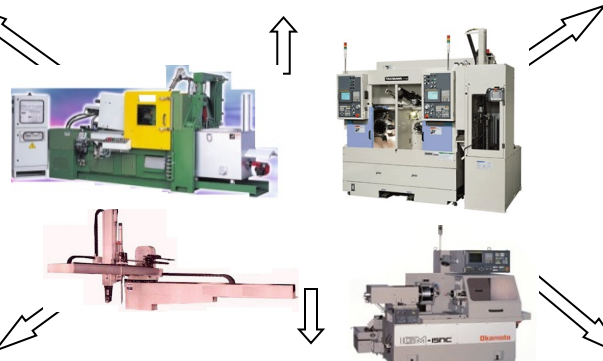
**PANEL UPGRADING**  
 Relay to PLC  
 Old model to new model  
 PLC programming



**PLC PROGRAMMING**



**ELECTRICAL TROUBLESHOOT**  
 PLC sequence  
 Hard wire



**PLC, touch screen, sensors, Servo unit.**

**MODIFICATION**

- Standardize job
- Simplify job
- Safety features
- Poka yoke



**PNEUMATIC/HYDRAULIC**  
 Troubleshoot  
 Modification